



(19) **United States**

(12) **Patent Application Publication**
Yuki

(10) **Pub. No.: US 2003/0231150 A1**

(43) **Pub. Date: Dec. 18, 2003**

(54) **DISPLAY PANEL AND DISPLAY APPARATUS**

Publication Classification

(75) **Inventor: Osamu Yuki, Tokyo (JP)**

(51) **Int. Cl.⁷ G09G 3/30**

(52) **U.S. Cl. 345/76**

Correspondence Address:

FITZPATRICK CELLA HARPER & SCINTO
30 ROCKEFELLER PLAZA
NEW YORK, NY 10112 (US)

(57) **ABSTRACT**

(73) **Assignee: CANON KABUSHIKI KAISHA,**
Tokyo (JP)

A display panel comprises a plurality of arranged pixels of organic EL devices, each having a pair of electrodes and a luminescent layer containing an organic EL material and sandwiched between the electrodes. The plurality of arranged pixels include fluorescent pixels of organic EL devices formed by mainly using a fluorescent material and phosphorescent pixels of organic EL devices formed by mainly using a phosphorescent material. A display apparatus comprises a control means for correcting the difference between the electroluminescent characteristics of the fluorescent pixels and those of the phosphorescent pixels.

(21) **Appl. No.: 10/438,029**

(22) **Filed: May 15, 2003**

(30) **Foreign Application Priority Data**

May 31, 2002 (JP) 2002/159000

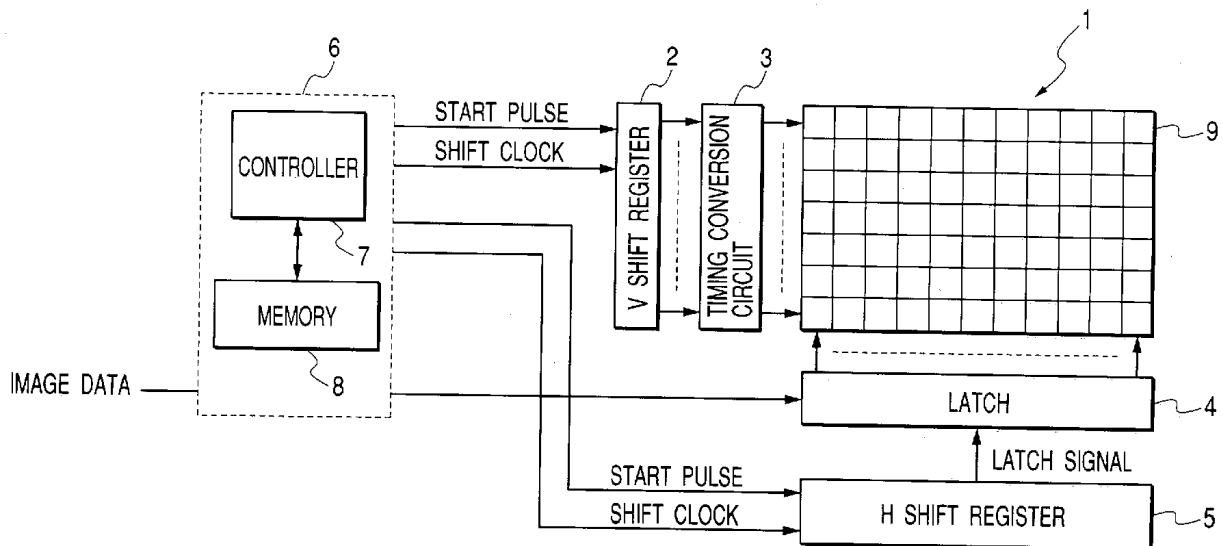


FIG. 1

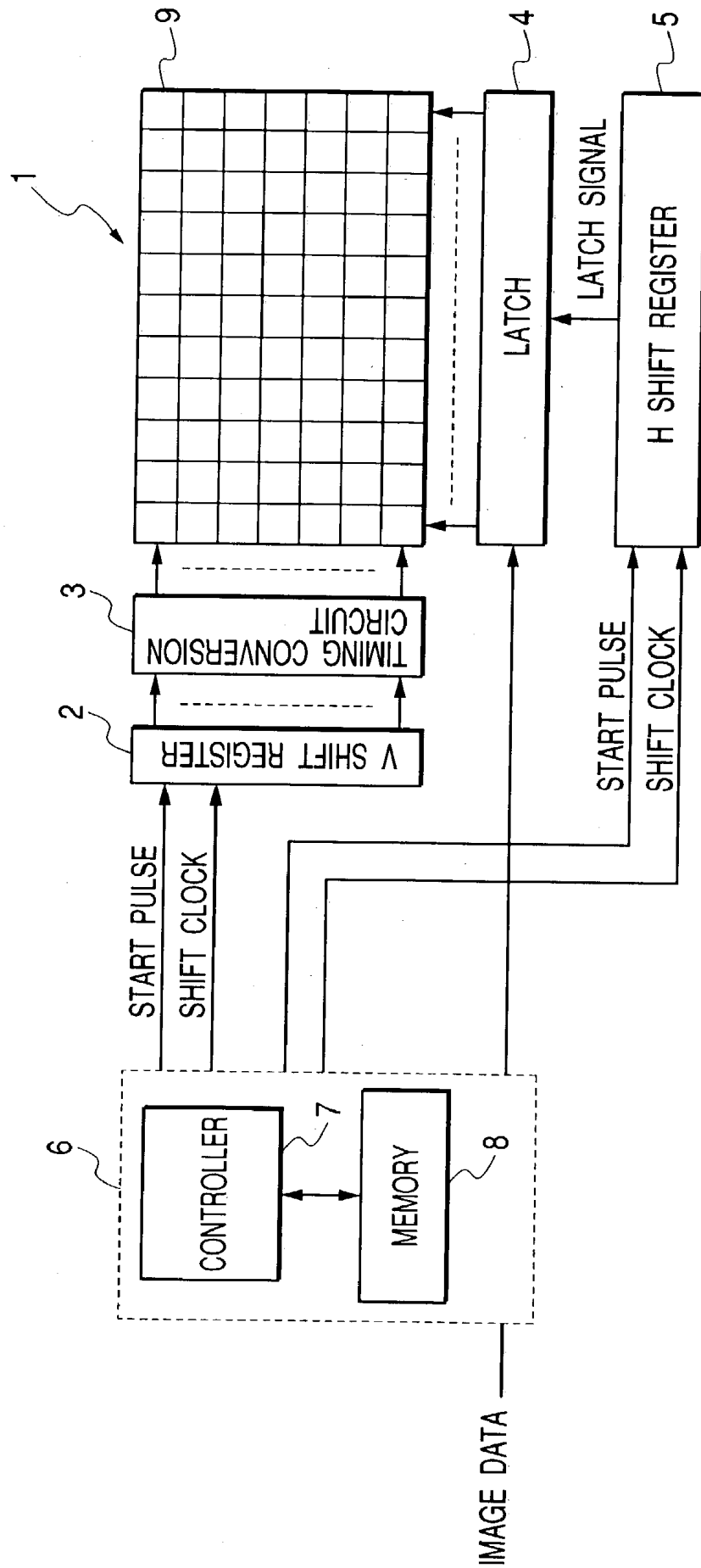


FIG. 2

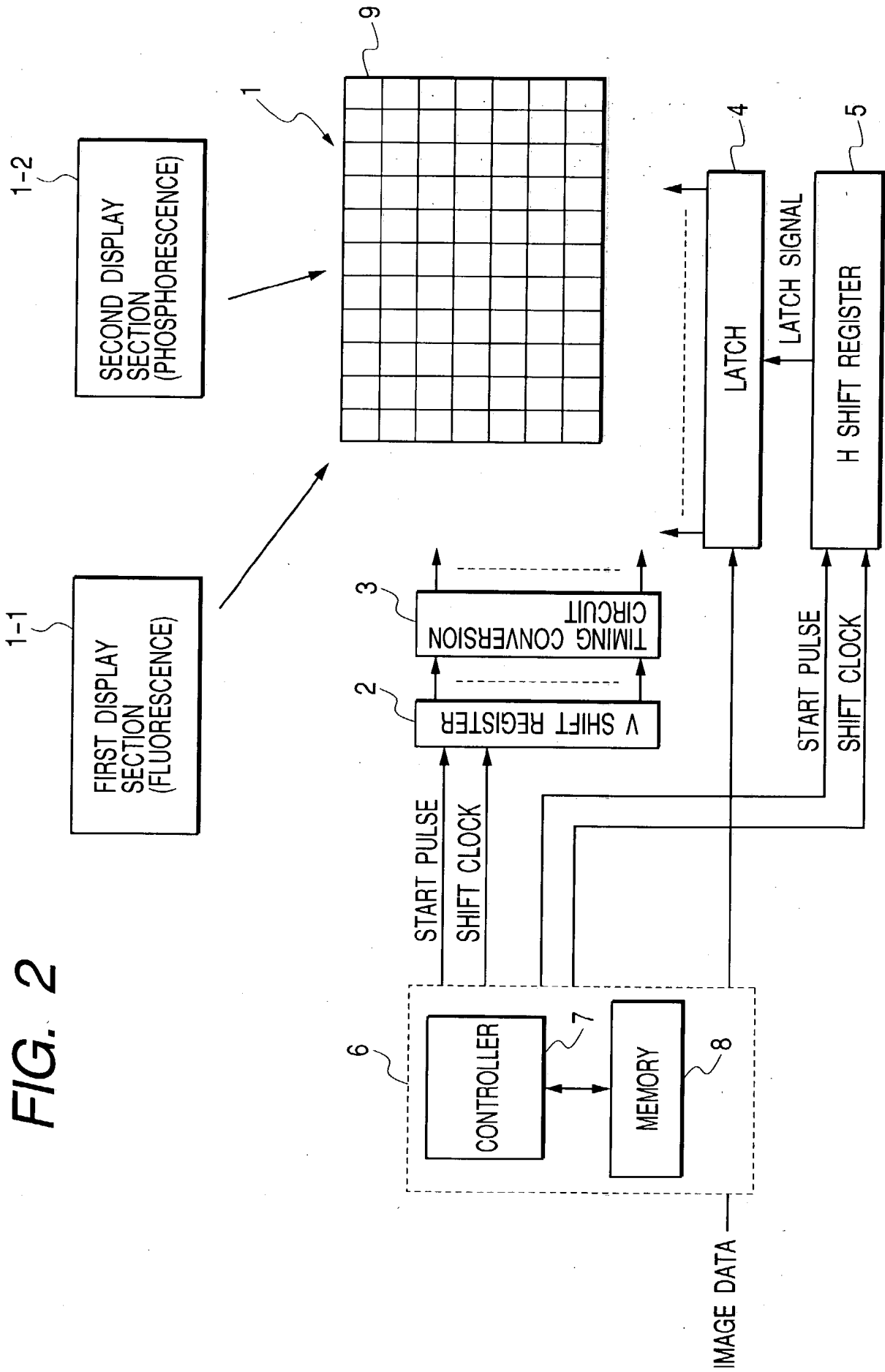


FIG. 3

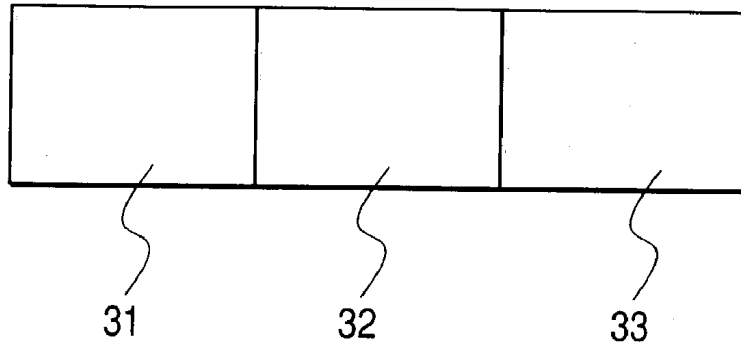


FIG. 4

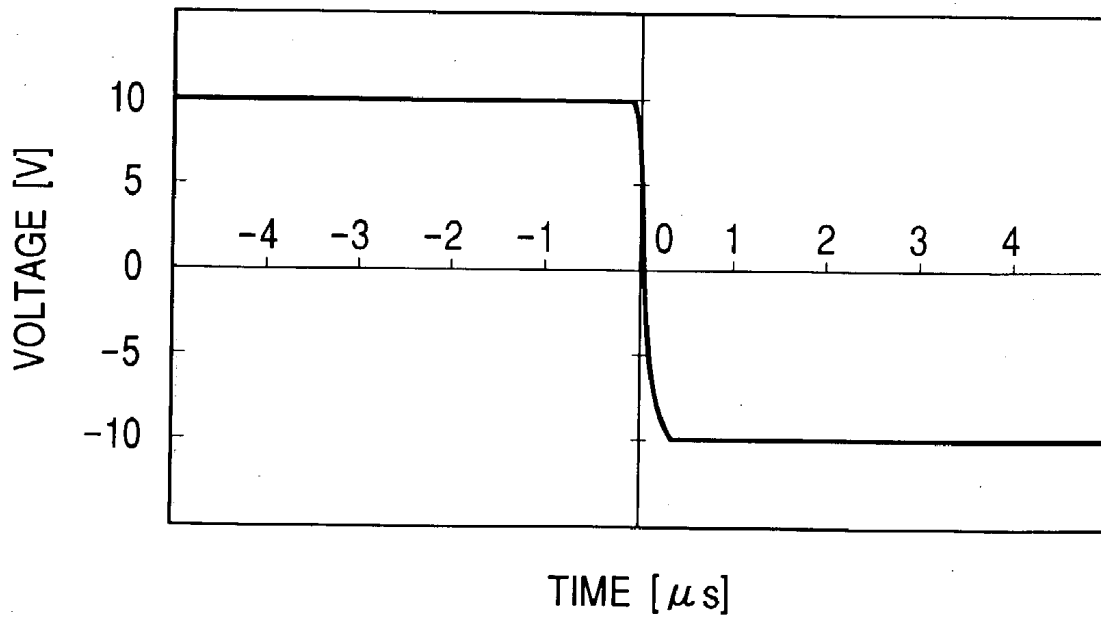


FIG. 5

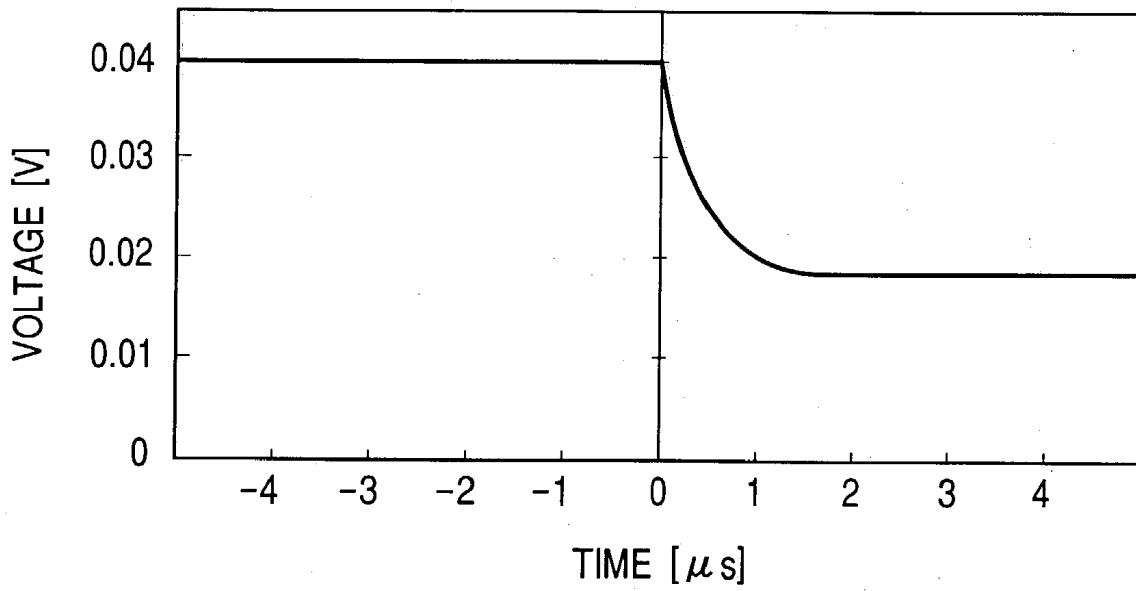


FIG. 6

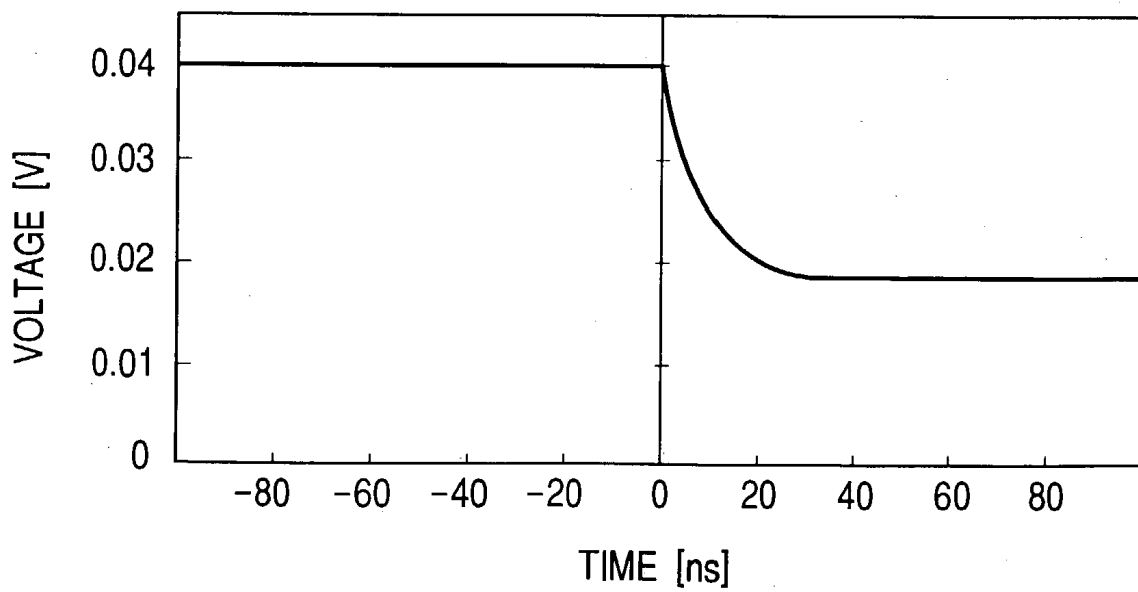


FIG. 7

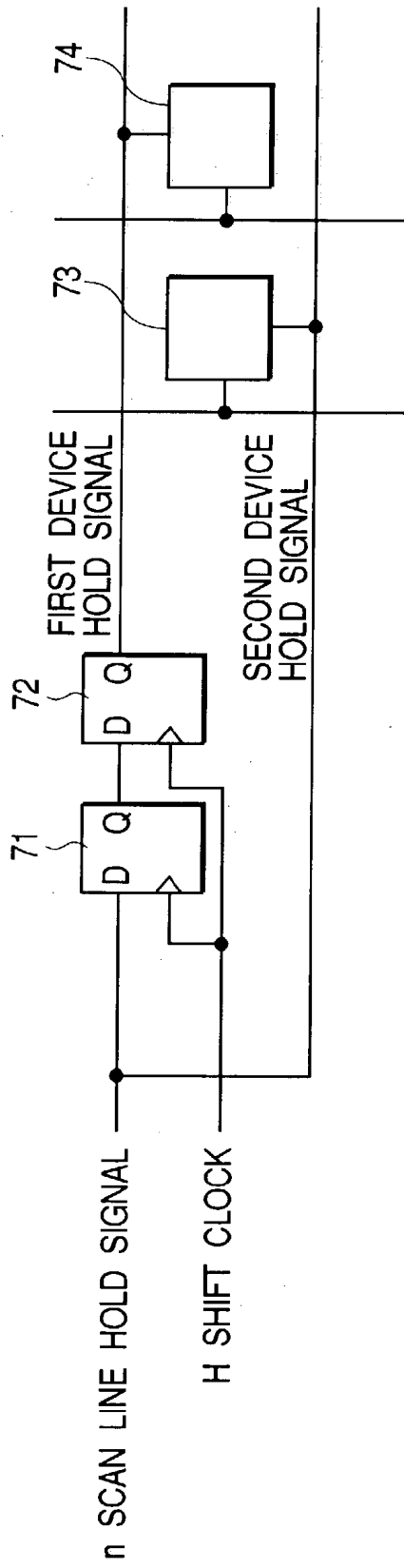


FIG. 8

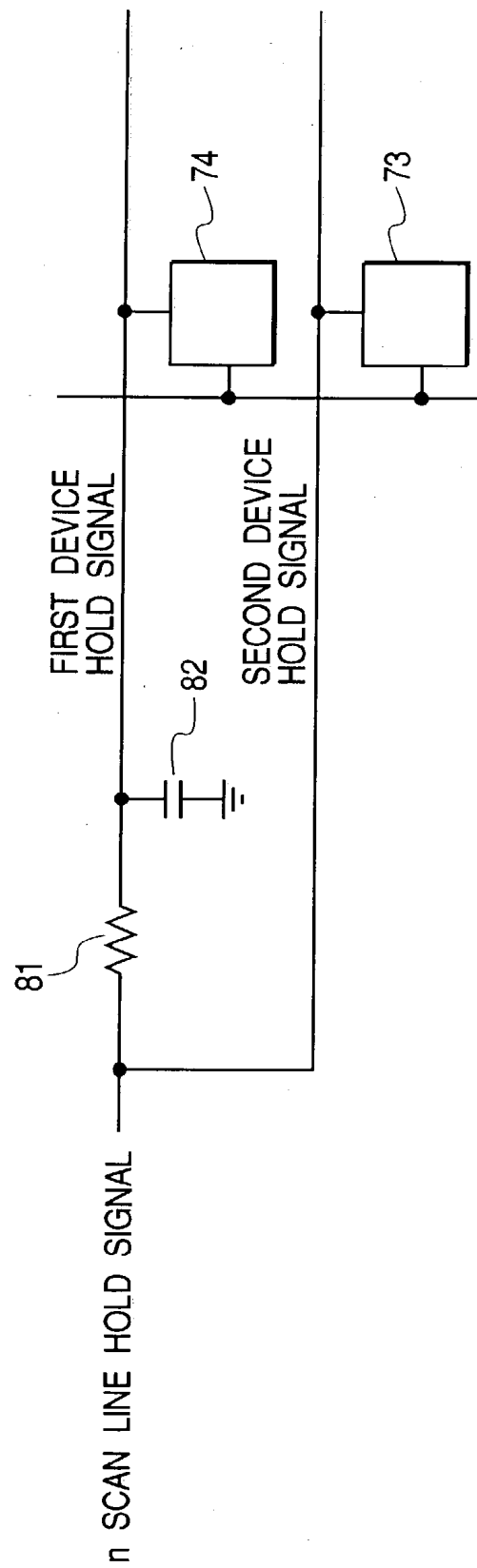


FIG. 9

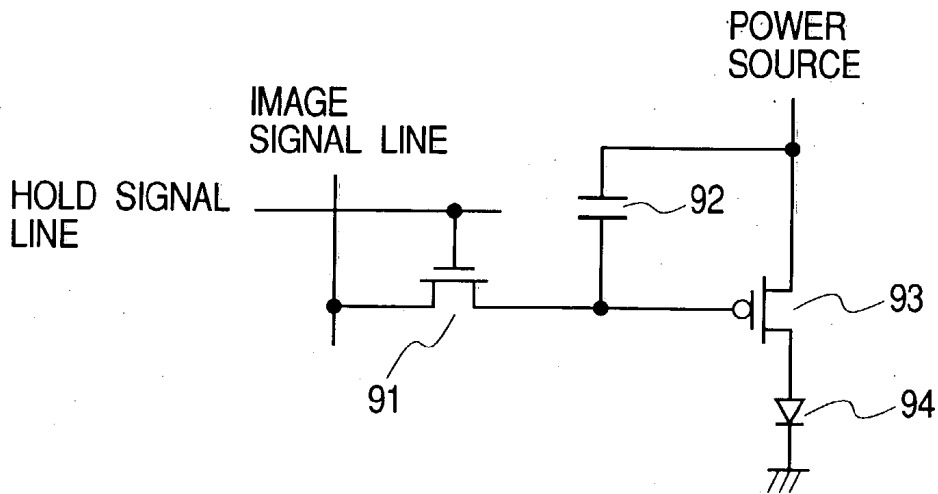


FIG. 10

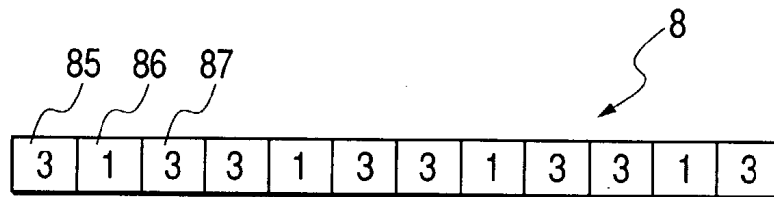


FIG. 11

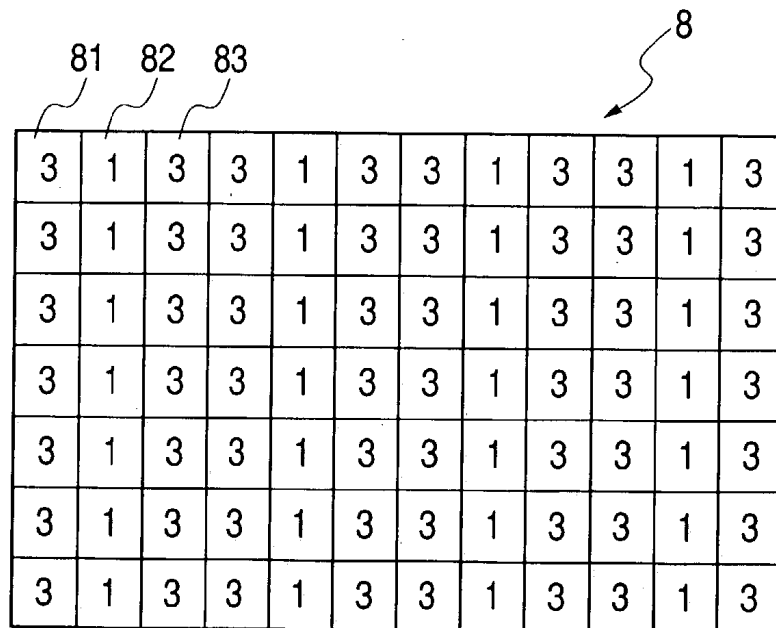


FIG. 14

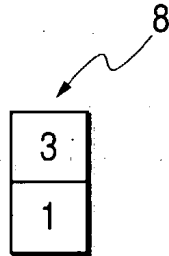


FIG. 15

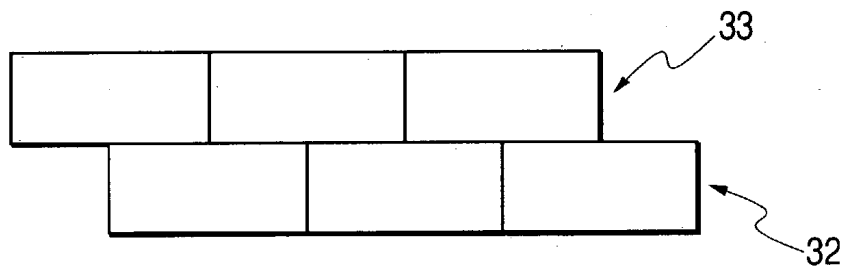


FIG. 16

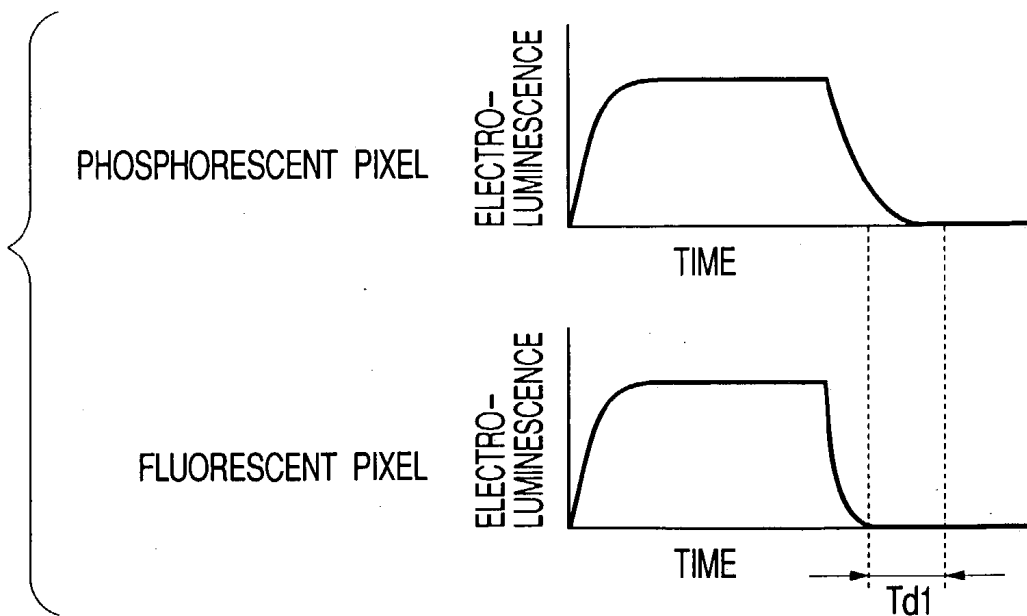


FIG. 17

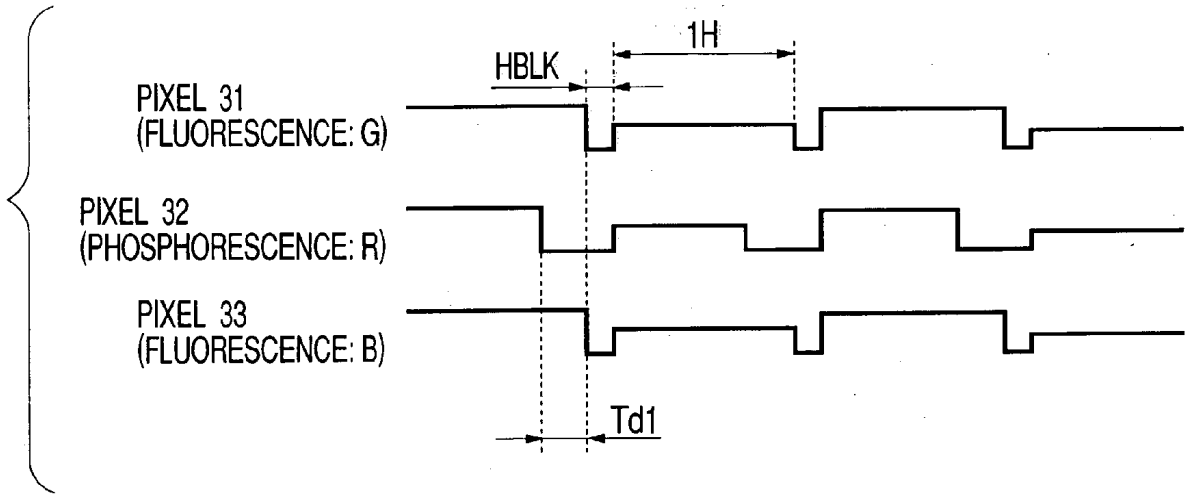


FIG. 18

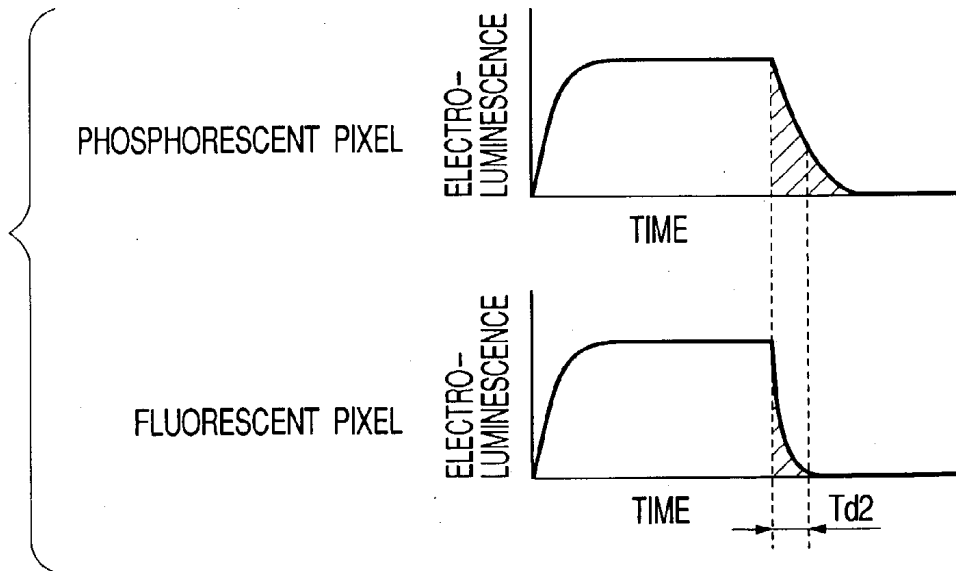


FIG. 19

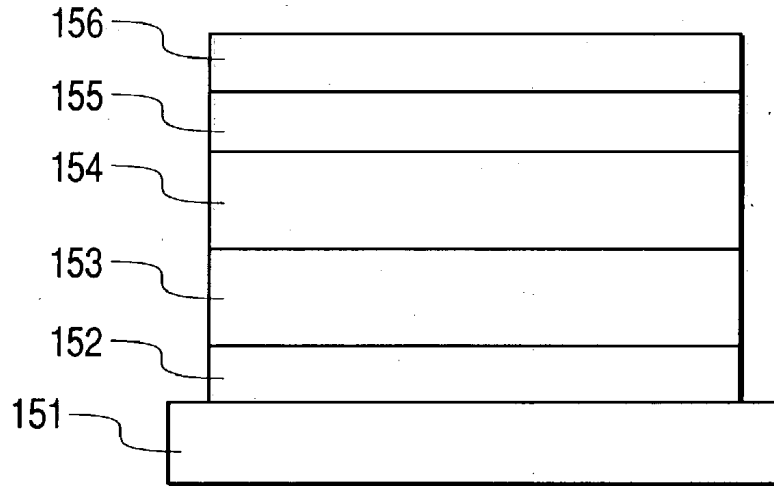


FIG. 20

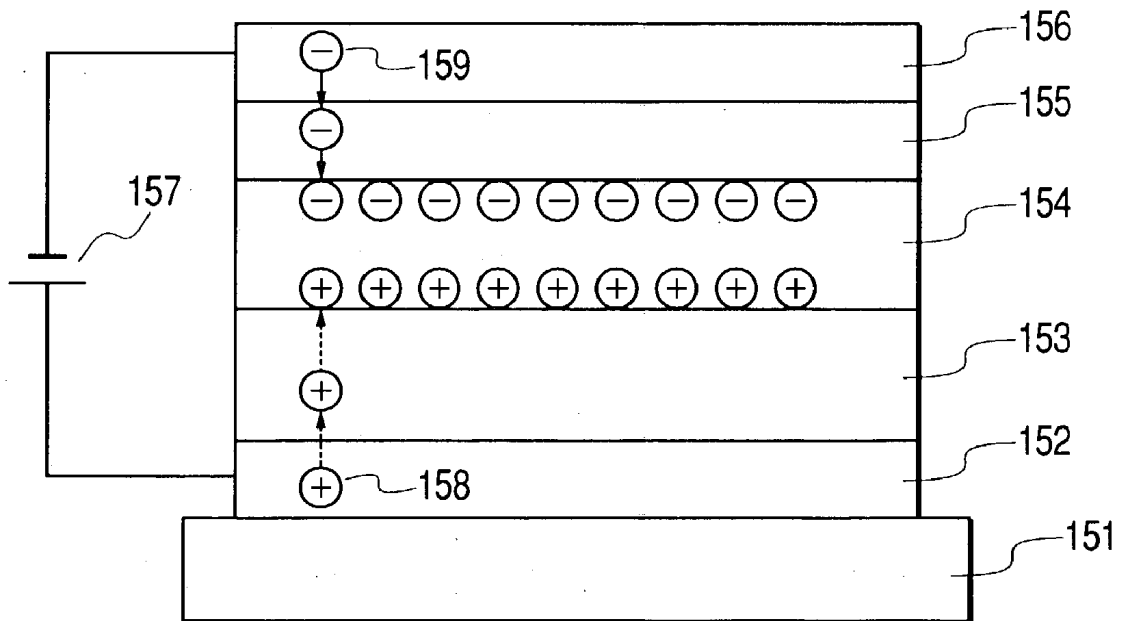


FIG. 21A

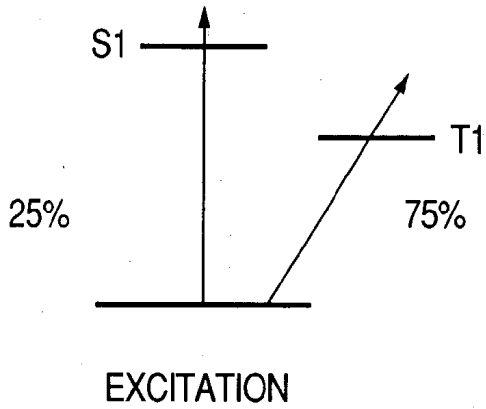


FIG. 21B

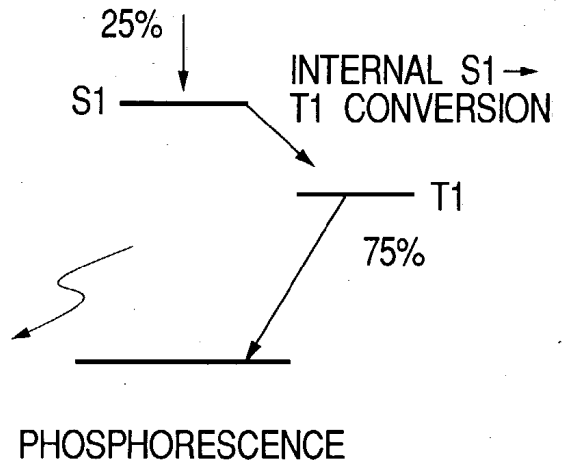


FIG. 22A

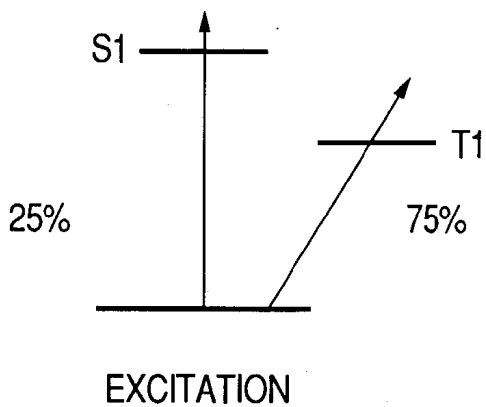
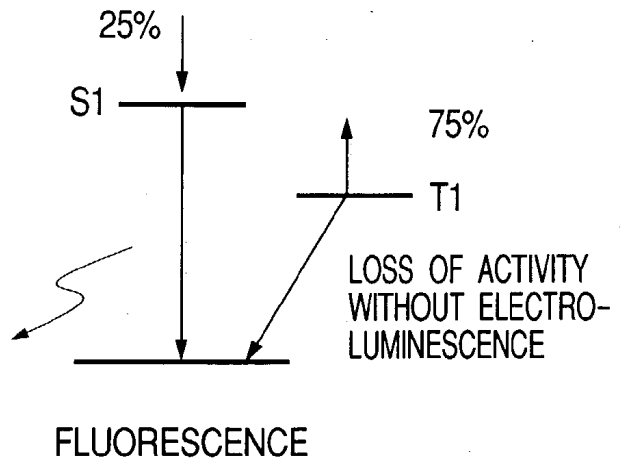


FIG. 22B



DISPLAY PANEL AND DISPLAY APPARATUS

BACKGROUND OF THE INVENTION

[0001] 1. Field of the Invention

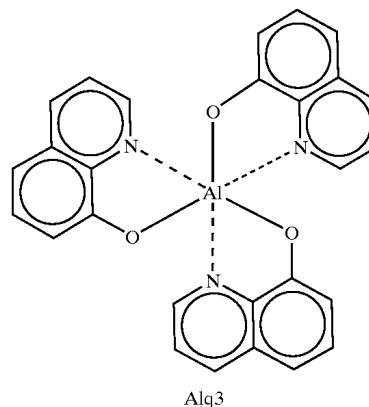
[0002] This invention relates to a display panel and a display apparatus. More particularly, this invention relates to a display panel comprising a plurality of pixels formed by using organic electroluminescent devices (organic EL devices) and also to a display system comprising such a display panel.

[0003] 2. Related Background Art

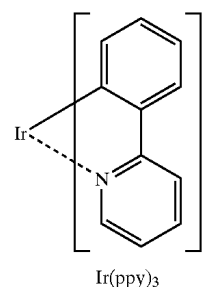
[0004] Organic EL devices are characterized by field luminescence of a thin film multilayer structure capable of emitting light to an enhanced degree of luminance. Organic EL devices can emit light highly efficiently if a low voltage is applied thereto particularly when the number of functional organic layers including at least a luminescent layer of an organic luminescent material is increased ("Applied Physics Letters," Vol. 51, 1987, p. 913; Vol. 65, 1989, p. 3610). Each device has a basic structure of anode/hole transport layer/luminescent layer (containing an organic luminescent material)/cathode. In the course of time, an alternative basic structure of anode/hole transport layer/luminescent layer/electron transport layer/cathode was proposed to further improve the efficiency. Meanwhile, efforts have been made to improve the emission efficiency by arranging a blocking layer between the luminescent layer and the electron transport layer for the purpose of blocking carriers passing through the luminescent layer or by arranging a metal thin film as electron injection layer between the cathode and the electron transport layer so that carriers may be injected with a low voltage.

[0005] In recent years, attention has been paid to luminescent devices including those made of an Ir complex to utilize the luminescence of triplet excitons showing a high occupancy ratio of 75% (single excitons being responsible for the remaining 25%) of electrons and holes injected from electrodes ("Applied Physics Letters," Vol. 75, 1999, p. 5). Fluorescence is used for luminescence caused by transition from an excited state of singlet, whereas phosphorescence is used for luminescence caused by transition from an excited state of triplet.

[0006] For example, the chemical compound having the structural formula shown below is an EL material Alq3 developed by C. W. Tang et al. of Kodak Co. and adapted to mainly use fluorescence. Alq3 emits green light and is adapted to produce fluorescence from a singlet state.



[0007] On the other hand, the compound having the structural formula shown below is an electroluminescent material Ir(ppy)₃ that was developed by M. A. Baldo et al. of Princeton University and emits green light just as Alq3. It is adapted to produce phosphorescence from a triplet state and can provide efficiency several times greater than that of Alq3.



[0008] Organic EL devices such as those described above are adapted to field luminescence to an enhanced degree of luminance when an electric current flowing between electrodes or from a thin film transistor (to be referred simply as TFT hereinafter) is used. Therefore, they are expected to find applications in the field of high density display apparatus. Full-color thin film displays can be realized by using organic EL devices that are adapted to emit red, green and blue (RGB) lights.

[0009] While the devices of display apparatus that utilize fluorescence as described above show a low efficiency, they respond quickly when they decrease light. Some of them (typically made of an electroluminescent material such as Alq3) show a light decreasing delay of about tens of several nano-seconds.

[0010] On the other hand, while the devices of display apparatus that utilize phosphorescence as described above show a high efficiency, some of them (typically made of an electroluminescent material such as Ir(ppy)_3) show a light decreasing delay between about 0.8 micro-seconds and several milli-seconds.

[0011] The luminescence efficiency of a phosphorescent material can remarkably differ from that of a fluorescent material in the initial states because of the respective modes of energy transition of excitons.

[0012] In the case of electroluminescence attributable to phosphorescence, carriers are firstly excited to a state above the lowest excited state of singlet and the lowest excited state of triplet. Subsequently, an internal conversion from the lowest excited state of singlet to the lowest excited state of triplet takes place and carriers tend to go back to the ground state, emitting luminescence energy. On the other hand, in the case of electroluminescence attributable to fluorescence, while excitation occurs as in the case of electroluminescence attributable to phosphorescence, carriers that are excited to above the lowest excited state of triplet emit energy as heat. In view of the above described mechanisms of electroluminescence, it may be so concluded that electroluminescence attributable to phosphorescence and electroluminescence attributable to fluorescence differ from each other particularly in terms of service life and the difference of service life is caused by the difference of energy transition among molecules and the resultant difference in terms of emission of heat and morphological changes.

[0013] Thus, due to the difference of electroluminescent characteristics between fluorescent materials and phosphorescent materials, efforts have been paid to develop high luminance high quality display panels by arranging pixels made of a single or identical material, which may be a fluorescent material or a phosphorescent material, on the display panel. These days, display apparatus formed by using such display panels are required to perform better than ever.

SUMMARY OF THE INVENTION

[0014] In view of the above identified circumstances, therefore the object of the present invention is to provide a high luminance high quality multi-color display panel formed by using organic EL devices and also a display apparatus realized by using such a display panel.

[0015] The inventors of the present invention have noticed that a full-color display panel can be made to show a higher luminance and a higher image quality by using both a fluorescent material and a phosphorescent material because electroluminescent materials of different colors show different efficiencies and are required to show different degrees of luminance because of the visual sense of man.

[0016] Thus, the present invention provide a display panel comprising a plurality of arranged pixels of organic electroluminescent devices, each having a pair of electrodes and a luminescent layer containing an organic electroluminescent material and sandwiched between the electrodes;

[0017] said plurality of arranged pixels including fluorescent pixels of organic electroluminescent devices formed by mainly using a fluorescent mate-

rial as organic electroluminescent material and phosphorescent pixels of organic electroluminescent devices formed by mainly using a phosphorescent material as organic electroluminescent material.

BRIEF DESCRIPTION OF THE DRAWINGS

[0018] FIG. 1 is a schematic block diagram of an embodiment of display apparatus according to the invention.

[0019] FIG. 2 is a schematic block diagram of another embodiment of display apparatus according to the invention.

[0020] FIG. 3 is a conceptual illustration of phosphorescent pixels and fluorescent pixels arranged for a single scanning line.

[0021] FIG. 4 is a graph illustrating the waveform of a video signal to be input to a display panel of the type under consideration, including a falling edge thereof.

[0022] FIG. 5 is a graph illustrating the voltage waveform as observed by an instrument for observing the optical response of a phosphorescent pixel to a video signal showing a waveform as illustrated in FIG. 4.

[0023] FIG. 6 is a graph illustrating the voltage waveform as observed by an instrument for observing the optical response of a fluorescent pixel to a video signal showing a waveform as illustrated in FIG. 4.

[0024] FIG. 7 is a schematic circuit diagram of a means for generating a video signal hold signal for a phosphorescent pixel and a fluorescent pixel.

[0025] FIG. 8 is a schematic circuit diagram of another means for generating a video signal hold signal for a phosphorescent pixel and a fluorescent pixel.

[0026] FIG. 9 is a schematic circuit diagram of the current drive TFT circuit in a pixel.

[0027] FIG. 10 is a schematic illustration of a video signal conversion memory.

[0028] FIG. 11 is a schematic illustration of another video signal conversion memory.

[0029] FIG. 12 is a schematic illustration of a video signal correction method utilizing a video signal conversion memory.

[0030] FIG. 13 is a schematic illustration of still another video signal conversion memory.

[0031] FIG. 14 is a schematic illustration of still another video signal conversion memory.

[0032] FIG. 15 is a conceptual illustration of phosphorescent pixels and fluorescent pixels arranged for respective scanning lines.

[0033] FIG. 16 is a graph illustrating the light decreasing timing of a phosphorescent pixel and that of a fluorescent pixel, which is different from the former light decreasing timing.

[0034] FIG. 17 is a graph illustrating the timing of holding a video signal to be supplied to a phosphorescent pixel and that of holding a video signal to be supplied to a fluorescent pixel, which is different from the former timing.

[0035] FIG. 18 is a graph illustrating the light decreasing timing of a phosphorescent pixel and that of a fluorescent pixel, which is different from the former light decreasing timing.

[0036] FIG. 19 is a schematic illustration of the configuration of an organic EL device.

[0037] FIG. 20 is a schematic illustration of the principle of electroluminescence of an organic EL device.

[0038] FIGS. 21A and 21B schematically illustrate energy levels that can be used for phosphorescence.

[0039] FIGS. 22A and 22B schematically illustrate energy levels that can be used for fluorescence.

DESCRIPTION OF THE PREFERRED EMBODIMENTS

[0040] Now, the present invention will be described in greater detail by referring to the accompanying drawings that illustrate preferred embodiments of the invention

[0041] FIGS. 19 and 20 are schematic illustrations of a typical organic EL device comprising a pair of electrodes, an anode and a cathode, and an organic layer including at least a luminescent layer containing an organic luminescent material and sandwiched between the electrodes. Referring to FIGS. 19 and 20, there are shown a glass substrate 151, a transparent anode 152 typically made of ITO, a hole transport layer 153, a luminescent layer 154, an electron transport layer 155 and a cathode 156. Referring particularly to FIG. 20, as a positive voltage and a negative voltage are applied respectively to the anode 152 and the cathode 156 from a power source 157, the holes 158 that have passed through the hole transport layer 153 and the electrons 159 that have passed through the electron transport layer 155 make excitons in the luminescent layer 154 and emit light by way of recombination.

[0042] FIG. 1 is a schematic block diagram of an embodiment of display apparatus according to the invention. Referring to FIG. 1, the embodiment 1 comprises a display panel 1 formed by arranging a plurality of pixels 9, which include fluorescent pixels and phosphorescent pixels. More specifically, the luminescent layers of the organic EL devices that are used as green pixels are mainly made of a fluorescent material adapted to emit fluorescent light from a singlet state, whereas the luminescent layers of the organic EL devices that are used as red pixels are made of a phosphorescent material adapted to emit phosphorescent light from a triplet state. Note that phosphorescence can show an efficiency that is several times greater than the efficiency of fluorescence, as mentioned above. Also note that the luminescent layers of the organic EL devices that are used as blue pixels are made of a fluorescent material adapted to emit fluorescent light from a singlet state, as in the green pixels. The pixels are arranged to form a matrix on the display panel of the display apparatus as shown in FIG. 1. Thus, as seen from FIG. 3, fluorescent pixels 31, 33 and a phosphorescent pixel 32 coexist in each picture element (group of RGB pixels) of the display panel 1.

[0043] It has been noticed that it is difficult to raise the efficiency of red organic EL devices. However, it is now possible to reduce the difference of efficiency among pixels by using fluorescent pixels and phosphorescent pixels to

form a display panel particularly when phosphorescent pixels are used only for red. Therefore, for a full-color display using RGB, for example, it is now possible to make all the pixels show an enhanced degree of luminance and at the same time maintain a well balanced state among the organic EL devices of the three primary colors in terms of luminance. Thus, it is possible to provide a high luminance high quality display panel that can display full-color images.

[0044] A display panel comprising both fluorescent pixels and phosphorescent pixels can be prepared by patterning a single substrate by means of a known patterning technique so as to form fluorescent pixels and phosphorescent pixels on the same substrate. Alternatively, such a display panel can be prepared by laying a first display section that is formed by arranging only a plurality of fluorescent pixels on a substrate on a second display section that is formed by arranging only a plurality of phosphorescent pixels on another substrate. It should be noted that, when first and second display sections are used, one of the display sections needs to be transparent at the parts thereof that respectively correspond to the pixels of the other display section so that the light from the other display section may be transmitted through the former display section. Additionally, the process of preparing a display panel by using first and second display sections can be simpler than the process of preparing a display panel by forming fluorescent pixels or phosphorescent pixels and subsequently forming phosphorescent pixels or fluorescent pixels, whichever appropriate, on a same single substrate by using a patterning technique.

[0045] Preferably, the area of a fluorescent pixel is greater than that of a phosphorescent pixel. As pointed out earlier, phosphorescence can be several times more efficient than fluorescence. In other words, the luminance of phosphorescent pixels per unit area is much greater than that of fluorescent pixels per unit area. Therefore, the difference of luminance can be reduced by differentiating the area of a fluorescent pixel and that of a phosphorescent pixel. More preferably, the ratio of the area of a fluorescent pixel to the area of a phosphorescent pixel is inversely proportional to the ratio of the efficiency of fluorescence of a fluorescent pixel to that of phosphorescence of a phosphorescent pixel. With this arrangement, the difference of luminance can be minimized. The area of the fluorescent pixels and that of the phosphorescent pixels can be differentiated either by a technique of adjusting the area of the organic layers formed at the time of patterning operation so as to differentiate the areas of two different types of electroluminescence or by a technique of differentiating the open areas of two different types of electroluminescence by arranging a shielding section or the like.

[0046] FIG. 4 is a graph illustrating the waveform of a video signal to be input to a display panel of the type under consideration, including a falling edge thereof and FIGS. 5 and 6 are graphs illustrating the voltage waveforms as observed by a photomultiplier for observing the optical response of a phosphorescent pixel and that of a fluorescent pixel to a video signal showing a waveform as illustrated in FIG. 4. Note that the vertical axis of the graph of FIG. 4 represents the voltage of the video signal used for observing the falling edge of the pixel. It will be appreciated from FIGS. 5 and 6 that the optical response of a phosphorescent pixel is about 1 μ s while that of a fluorescent pixel is about 30 to 40 ns. In other words, a fluorescent pixel can decrease

light more quickly than a phosphorescent pixel if the delay of the original signal is taken into consideration.

[0047] When pixels showing different durations of after glow relative to a display signal coexist on a single display panel **1**, a specific display color may become noticeable and subsequently disappear.

[0048] Additionally, as shown in **FIGS. 21A and 21B**, phosphorescence is produced as carriers are firstly excited to a state above the lowest excited state **S1** of singlet and the lowest excited state **T1** of triplet and subsequently the state **S1** is internally converted to the state **T1** and is trying to go back to the ground state, while discharging energy of luminescence. In the case of fluorescence, on the other hand, carriers are excited as in the case of phosphorescence but those that are excited to a state above the state **T1** discharge energy as heat as shown in **FIGS. 22A and 22B**. In view of the mechanisms of electroluminescence, it may be so concluded that electroluminescence attributable to phosphorescence and electroluminescence attributable to fluorescence differ from each other particularly in terms of service life and the difference of service life is caused by the difference of energy transition among molecules and the resultant difference in terms of emission of heat and morphological changes.

[0049] Thus, according to the invention, there is provided a display apparatus comprising not only a display panel but also a control means for inputting different signals for the fluorescent pixels and those for the phosphorescent pixels showing different electroluminescent characteristics. With this arrangement, it is possible to supply signals, taking the respective electroluminescent characteristics into consideration.

[0050] More specifically, the after glow of a specific color due to the difference of light decreasing timing can be prevented from occurring by delaying the timing of the falling edge of a video signal and/or that of the falling edge of a signal showing a polarity opposite to that of the video signal for the fluorescent pixels relative to the counterparts for the phosphorescent pixels.

[0051] More preferably, the control means is provided with a memory means for storing the arrangement and driving conditions of the fluorescent pixels and those of the phosphorescent pixels so that signals that are appropriately corrected by considering the electroluminescent characteristics of the fluorescent pixels and those of the phosphorescent pixels can be input to the pixels. The driving conditions specifically include the voltage to be used for driving the pixels and the time series waveform of the applied voltage.

[0052] With the above described arrangement, a higher voltage may be applied to the fluorescent pixels so that any difference of luminance may be eliminated and the difference of efficiency of electroluminescence between the fluorescent pixels and the phosphorescent pixels may be corrected on the basis of the arrangement and driving conditions stored in the memory means regardless of the difference of efficiency of electroluminescence. Additionally, it is possible to store the ratio of the efficiency of electroluminescence of a fluorescent pixel to that of a phosphorescent pixel after a predetermined period of time of operation in a memory means and determine the ratio of the voltages to be applied to the respective pixels after the

predetermined period of time in order to correct the difference of service life. With this arrangement, the change in the difference of electroluminescence efficiency ratio after a predetermined period of time that is attributable to the difference of electroluminescence service life can be addressed properly so that the effect of preventing any difference of luminance between the two different types of pixels can be maintained for a long period of time.

[0053] (First Embodiment)

[0054] The embodiment of display apparatus according to the invention and illustrated in **FIG. 1** will be described in greater detail by referring to **FIG. 9**.

[0055] In **FIG. 1**, reference symbol **1** denotes a display panel on which a plurality of pixels **9** are arranged to form a matrix. In **FIG. 1**, there are also shown a V shift register **2**, a timing converting circuit **3**, an H shift register **5** and a latch **4** that are arranged so as to be flush with the display panel **1** and supply video signals and scan signals to the thin film transistors (to be referred to as TFTs hereinafter) of the pixels **9**. Thus, the control means of the embodiment comprises all the components of the display apparatus other than the display panel **1**, which include the V shift register **2**, the timing converting circuit **3**, the H shift register **5**, the latch **4** and the display control section **6** including a controller **7** and a video signal conversion memory (memory means) **8**. The display control section **6** supplies timing signals and video signals.

[0056] **FIG. 9** shows a circuit diagram of a typical circuit that can be used in a pixel **9**. In the pixel **9**, the source of P-channel type TFT **93** is connected to the power source and the cathode of organic EL device **94** is connected to the ground potential while the anode of the device is connected to the drain of the TFT **93**. The gate of the N-channel type TFT **91** is connected to the hold signal line for vertical scanning and the source of the TFT **91** is connected to an image signal line, while the drain line is connected to a hold capacitance **92** and also to the gate of the TFT **93**. To make the pixel active for electroluminescence, firstly the hold signal line for vertical scanning is held to a selected state and the video signal latched to the horizontal latch circuit **4** is applied to the image signal line as voltage. Then, the source and the drain of the TFT **91** are held to a conducting state and the hold capacitance **92** is charged or discharged electrically. Then, the gate potential of the TFT **93** comes to agree with the potential of the video signal. If the hold signal for vertical scanning is in an unselected state, the TFT **91** is turned off. At this time, the TFT **93** is separated from the image signal but the potential is held stably due to the hold capacitance **92** connected to the gate of the TFT **93**. In this way, an electric current that corresponds to the hold capacitance **92** between the gate and the source of the TFT **93** is supplied to the organic EL device **94**.

[0057] The pixels on the display panel **1** of **FIG. 1** are arranged to form a matrix and, as shown in **FIG. 3**, fluorescent pixels and phosphorescent pixels coexist on a same scan line.

[0058] With this arrangement, the pixel light decreasing time can differ among the pixels on a same scan line. More specifically, a phosphorescent pixel and a fluorescent pixel arranged on a same scan line show a difference of light decreasing time of $Td1$ as shown in **FIG. 16**.

[0059] This difference is corrected by making the falling edge of the video signal of the phosphorescent pixel **32** come earlier than that of the video signal of the fluorescent pixel by the time period of $Td1$. In other words, the operation of signal switching to horizontal blank HBLK is made to come earlier for the phosphorescent pixel than for the fluorescent pixel by $Td1$ as illustrated in **FIG. 17**.

[0060] **FIG. 7** is a schematic circuit diagram of a circuit (timing converting circuit **3**) that can be used for producing the time difference. Note that n scan line hold signal is supplied from the V shift register **2** in **FIG. 1**. In **FIG. 7**, pixel **73** is a phosphorescent pixel and pixel **74** is a fluorescent pixel. Video signal hold signals of two different types including a first device hold signal and a second device hold signal are applied to the pixels arranged on each line. The falling edge of the first device hold signal is delayed by $Td1$ as shown in **FIG. 17** by the shift register formed by flip-flops **71**, **72** (the duration of $Td1$ is determined by the number of steps of the flip-flops and the period of the H shift clock). The rising edge of the first device hold signal and that of the second device hold signal are made to agree with each other as shown in **FIG. 17** in synchronism with the generation of a horizontal blank (not shown).

[0061] Now, the part of the circuit adapted to correct the difference of the initial efficiencies of electroluminescence of the two different pixels will be described below.

[0062] As pointed out above, the initial efficiency of electroluminescence of the fluorescent pixels **31**, **33** and that of the phosphorescent pixel **32** remarkably differ from each other because of the difference of internal energy transition.

[0063] In order to equalize the ratio of electroluminescence to that of visually sensed intensity of the pixels of the two different types, the voltage of video signal is modified by using different magnifications that are determined respectively for the phosphorescent pixel **32** and the fluorescent pixels **31**, **33** before it is applied to the horizontal video signal latch **4**. **FIG. 11** is a schematic illustration of some of the data stored in the video signal conversion memory that is used in this embodiment to deal with this problem. Note that the pixel matrix of the display panel **1** has 12×7 pixels. Theoretically, the efficiency of electroluminescence of a phosphorescent material is three times greater than that of a fluorescent material. Therefore, in **FIG. 11**, the ratio of the efficiency of electroluminescence of a phosphorescent pixel **32** to that of a fluorescent pixel **31** or **33** is made equal to 1:3, although the present invention is by no means limited thereto.

[0064] The magnifications to be used for the video signal are read with the video signal as shown in **FIG. 12** and the video signal is multiplied by the predetermined magnifications before it is fed to the horizontal video signal latch **4**. The video signal latched in the horizontal video signal latch **4** is then supplied from the TFT **93** in the pixel to the electroluminescent device **94** as electric current at the timing given by the V shift register **2** in a manner as described earlier. As a result, the initially displayed image of the display apparatus comprising fluorescent pixels and phosphorescent pixels whose efficiencies of electroluminescence are different from each other is made to be uniform in terms of luminance to the visual sense. Note that the luminance of a phosphorescent pixel and that of a fluorescent pixel can be made to be substantially equal to each other to the visual sense by modifying the ratio of their areas.

[0065] It is known that the luminance of an organic EL device relative to the electric current falls with time. A phosphorescent pixel **32** and a fluorescent pixel **31** or **33** are different from each other in terms of the fall of luminance with time. **FIG. 13** is a schematic illustration of some of the data stored in the video signal conversion memory of this embodiment that is used to deal with this problem. Note that the pixel matrix of the display panel **1** has 12×7 pixels.

[0066] For the initial stages, the ratio of the efficiency of electroluminescence of the phosphorescent pixel **32** to that of the fluorescent pixel **31** or **33** is defined to be equal to 1:3 as shown in **FIG. 11**. However, after 1,000 hours, the ratio of the efficiency of electroluminescence of the phosphorescent pixel **32** to that of the fluorescent pixel **31** or **33** is defined to be equal to 1:2 as shown in **FIG. 13**. The video signal conversion memory **8** is rewritten when the controller **7** counts 1,000 hours by using the initially specified factor for changing the ratio. The ratio of magnifications of 1:2 represents the fact that the phosphorescent pixel **32** is degraded more quickly than the fluorescent pixel **31** or **33**. The magnifications are read out sequentially with the video signal as shown in **FIG. 12** and the video signal is multiplied by a predetermined magnification by a multiplier **84** and supplied to the horizontal video signal latch **4**. The video signal latched to the horizontal video signal latch **4** is then supplied from the TFT **93** in the pixel to the organic EL device **94** as electric current at the timing of the V shift register **2** in a manner as described earlier. As a result, the displayed image of the display apparatus comprising fluorescent pixels and phosphorescent pixels whose service lives are different from each other is made to be uniform in terms of luminance to the visual sense regardless of the duration of the use of the display apparatus.

[0067] (Second Embodiment)

[0068] This embodiment has a configuration substantially same as that of First Embodiment shown in **FIG. 1**. However, in this embodiment, fluorescent pixels **32** and phosphorescent pixels **33** are arranged for respective scanning lines on a display panel **1** as shown in **FIG. 15**.

[0069] With this arrangement, the light decreasing time of pixels differs on a scan line basis and the difference of light decreasing time is equal to $Td1$ as shown in **FIG. 16**.

[0070] To correct the difference, the delay $Td1$ of the falling edge for light decreasing phosphorescent pixels is reduced to the area of the pixel and made equal to $Td2$, which is equal to $Td1$ in **FIG. 17**. Thus, the operation of signal switching to horizontal blank HBLK is made to come earlier for the phosphorescent pixel than for the fluorescent pixel by $Td1$.

[0071] **FIG. 8** is a schematic circuit diagram of a circuit that can be used for producing the time difference. Note that n scan line hold signal is supplied from the V shift register **2** in **FIG. 1**. In **FIG. 8**, pixel **73** is a phosphorescent pixel and pixel **74** is a fluorescent pixel. Video signal hold signals of two different types including a first device hold signal and a second device hold signal are applied to the pixels arranged on each line. The falling edge of the first device hold signal is delayed by $Td1$ as shown in **FIG. 17** by defining a time constant by means of a resistor **81** and a capacitance **82** (the duration of $Td1$ can be determined by means of the resistance of the resistor **81** and the capacity of

the capacitance **82**). The rising edge of the first device hold signal and that of the second device hold signal are made to agree with each other as shown in **FIG. 17** in synchronism with the generation of a horizontal blank (not shown).

[0072] Now, the part of the circuit adapted to correct the difference of the initial efficiencies of electroluminescence of the two different pixels will be described below.

[0073] As pointed out above, the initial efficiency of electroluminescence of the fluorescent pixels **31**, **33** and that of the phosphorescent pixel **32** remarkably differ from each other because of the difference of internal energy transition.

[0074] In order to equalize the ratio of electroluminescence to that of visually sensed intensity of the pixels of the two different types, the voltage of video signal is modified by using different magnifications that are determined respectively for the phosphorescent pixel **32** and the fluorescent pixels **31**, **33** before it is applied to the horizontal video signal latch **4**. **FIG. 14** is a schematic illustration of a video signal conversion memory that can be used for this purpose. Note that the pixel matrix of the display panel **1** has 12×8 pixels (not shown). Theoretically, the efficiency of electroluminescence of a phosphorescent material is three times greater than that of a fluorescent material. Therefore, in **FIG. 14**, the ratio of the efficiency of electroluminescence of a phosphorescent pixel **32** to that of a fluorescent-pixel **31** or **33** is made equal to 1:3, although the present invention is by no means limited thereto.

[0075] The magnifications to be used for the video signal are read with the video signal and the video signal is multiplied by the predetermined magnifications before it is fed to the horizontal video signal latch **4**. The video signal latched to the horizontal video signal latch **4** is then supplied from the TFT **93** in the pixel to the organic EL device **94** as electric current at the timing given by the V shift register **2** in a manner as described earlier. For example, a video signal multiplied by a magnification of 3 as shown in **FIG. 14** is supplied to the scan line **33** formed by singlet electroluminescent devices in **FIG. 15**, whereas a video signal multiplied by a magnification of 1 as shown in **FIG. 14** is supplied to the next scan line **32** formed by triplet electroluminescent devices. As a result, the initially displayed image of the display apparatus comprising fluorescent pixels and phosphorescent pixels whose efficiencies of electroluminescence are different from each other is made to be uniform in terms of luminance to the visual sense. Note that the luminance of a phosphorescent pixel and that of a fluorescent pixel can be made to be substantially equal to each other to the visual sense by modifying the ratio of their areas.

[0076] It is known that the luminance of an organic EL device relative to the electric current falls with time. As pointed out earlier, a phosphorescent pixel **32** and a fluorescent pixel **33** are different from each other in terms of the fall of luminance with time. For the initial stages, the ratio of the efficiency of electroluminescence of the phosphorescent pixel **32** to that of the fluorescent pixel **33** is defined to be equal to 1:3 as shown in **FIG. 14**. However, after 1,000 hours, the ratio of the efficiency of electroluminescence of the phosphorescent pixel **32** to that of the fluorescent pixel **33** is defined to be equal to 1:2. The video signal conversion memory **8** is rewritten when the controller **7** counts 1,000 hours by using the initially specified factor for changing the ratio. The ratio of magnifications of 1:2 represents the fact

that the phosphorescent pixel **32** is degraded more quickly than the fluorescent pixel **33**. The magnifications that are rewritten to 1:2 are read out with the video signal for each scan line and the video signal is multiplied by a predetermined magnification and supplied to the horizontal video signal latch **4**. The video signal latched to the horizontal video signal latch **4** is then supplied from the TFT **93** in the pixel to the organic EL device **94** as electric current at the timing of the V shift register **2** in a manner as described earlier. As a result, the displayed image of the display apparatus comprising fluorescent pixels and phosphorescent pixels whose service lives are different from each other is made to be uniform in terms of luminance to the visual sense regardless of the duration of the use of the display apparatus.

[0077] (Third Embodiment)

[0078] As shown in **FIG. 2**, the display panel **1** of this embodiment comprises a first display section **1-1** that is formed by arranging only a plurality of fluorescent pixels on a substrate on a second display section **1-2** that is formed by arranging only a plurality of phosphorescent pixels on another substrate. The first display section is laid on the second display section or vice versa. More specifically, a singlet material adapted to fluorescence is laid by evaporation on a substrate on which a number of TFTs as shown in **FIG. 9** are arranged, whereas a triplet material adapted to phosphorescence is laid by evaporation on another substrate on which a number of TFTs as shown in **FIG. 9** are arranged.

[0079] The light decreasing time of the first display section differs from that of the second display section to give rise to a difference of light decreasing time Td1 as shown in **FIG. 16**.

[0080] In order to correct the difference, the falling edge of the video signal applied to the first display section **1-1** for fluorescence for the operation of signal switching to horizontal blank HBLK is delayed by a time period of Td1 from the falling edge of the video signal applied to the second display section **1-2** for phosphorescence.

[0081] Either the timing of a first device hold signal or that of a second device hold signal is given as video signal hold signal to the display section that is to be operated. A circuit for generating a time difference as shown in **FIG. 7** is used to generate hold signals. A scan line hold signal is supplied from the V shift register **2** shown in **FIG. 1**. A second device hold signal whose falling edge is not delayed is used when the second display section **1-2** is operated. On the other hand, a first device hold signal whose falling edge is delayed by Td1 is used when the first display section **1-1** is operated. The falling edge of the first device hold signal is delayed by Td1 by means of a shift register comprising flip-flops **71**, **72** (the duration of Td1 is determined by the number of steps of the flip-flops and the period of the H shift clock). The rising edge of the first device hold signal and that of the second device hold signal are made to agree with each other as shown in **FIG. 17** in synchronism with the generation of a horizontal blank (not shown).

[0082] As shown in **FIG. 8**, the delay time can alternatively be determined by defining a time constant by means of a resistor **81** and a capacitance **82**.

[0083] Now, the part of the circuit adapted to correct the difference of the initial efficiencies of electroluminescence of the two different pixels will be described below.

[0084] As pointed out above, the initial efficiency of electroluminescence of the first display section 1-1 for fluorescence and that of the second display section 1-2 for phosphorescence remarkably differ from each other because of the difference of internal energy transition.

[0085] In order to equalize the ratio of electroluminescence of the two display sections to that of visually sensed intensity of the pixels of the display sections, the voltage of video signal is modified by using different magnifications that are determined respectively for the fluorescent pixels of the first display section 1-1 and the phosphorescent pixels of the second display section 1-2 before it is applied to the horizontal video signal latch 4. FIG. 14 is a schematic illustration of some of the data stored in the video signal conversion memory that is used in this embodiment to deal with this problem. Theoretically, the efficiency of electroluminescence of a phosphorescent material is three times greater than that of a fluorescent material. Therefore, the ratio of the magnification to be used for the first display section 1-1 for fluorescence to that of the magnification to be used for the second display section 1-2 for phosphorescence is made equal to 3:1. However, the ratio of magnifications can change as a function of the state of transition of internal energy of the phosphorescent material, the light decreasing efficiency that can vary depending on the concentration of the dopant and so on.

[0086] The magnifications to be used for the video signal are read with the video signal and the video signal is multiplied by the predetermined magnifications before it is fed to the horizontal video signal latch 4. The video signal latched to the horizontal video signal latch 4 is then supplied from the TFT 93 in the pixel to the organic EL device 94 as electric current at the timing given by the V shift register 2 in a manner as described earlier. For example, a video signal multiplied by a magnification of 3 as shown in FIG. 14 is supplied to the scan line 33 formed by singlet electroluminescent devices shown in FIG. 15, whereas a video signal multiplied by a magnification of 1 as shown in FIG. 14 is supplied to the next scan line 32 formed by triplet electroluminescent devices. As a result, the initially displayed image of the display section comprising fluorescent pixels and phosphorescent pixels whose efficiencies of electroluminescence are different from each other is made to be uniform in terms of luminance to the visual sense.

[0087] It is known that the luminance of an organic EL device relative to the electric current falls with time. As pointed out earlier, a phosphorescent pixel 32 and a fluorescent pixel 33 are different from each other in terms of the fall of luminance with time. For the initial stages, the ratio of the magnification applicable to the efficiency of electroluminescence of a phosphorescent pixel 32 to that applicable to the efficiency of electroluminescence of a fluorescent pixel 33 is specified to be equal to 1:3 as shown in FIG. 14. However, after 1,000 hours, the ratio of the efficiency of electroluminescence of the phosphorescent pixel 32 to that of the fluorescent pixel 33 is defined to be equal to 1:2. The video signal conversion memory 8 is rewritten when the controller 7 counts 1,000 hours by using the initially specified factor for changing the ratio. The ratio of magnifications of 1:2 represents the fact that the phosphorescent pixel 32 is degraded more quickly than the fluorescent pixel 33. The magnifications that are rewritten to 1:2 are read out with the video signal for each scan line and the video signal is

multiplied by a predetermined magnification to be used for the video signal as shown in FIG. 14 and supplied to the horizontal video signal latch 4. The video signal latched to the horizontal video signal latch 4 is then supplied from the TFT 93 in the pixel to the organic EL device 94 as electric current at the timing of the V shift register 2 in a manner as described earlier. As a result the displayed image of the display apparatus comprising a first display section 1-1 and a second display section 1-2 whose service lives are different from each other is made to be uniform in terms of luminance to the visual sense regardless of the duration of the use of the display apparatus.

[0088] As described above, the present invention provides a display panel comprising phosphorescent devices formed by using a highly efficient triplet material and fluorescent devices formed by using a singlet material that can be selected from a number of currently available materials and a display panel comprising a first display section formed by using only phosphorescent devices and a second display section formed by using only fluorescent devices, the first display section and the second display section being arranged on a same display substrate (glass substrate, TFT substrate). A display panel according to the present invention can display high luminance high quality full-color images.

[0089] According to the invention, there is also provided a display apparatus comprising such a display panel and a control means having in combination a function of shifting the timing of the falling edge of a signal and a function of correcting the difference of efficiency of electroluminescence and the difference of service life for electroluminescence on the basis of the data stored in a memory means. Such a display apparatus can reduce any after glow, uneven displays in the initial stages of operation and changes with time of the displayed image so as to display images with good gradations. The video signal conversion memory and the controller may be arranged on the substrate that carries the display panel or on some other places without changing their effects.

What is claimed is:

1. A display panel comprising a plurality of arranged pixels of organic electroluminescent devices, each having a pair of electrodes and a luminescent layer containing an organic electroluminescent material and sandwiched between the electrodes;

said plurality of arranged pixels including fluorescent pixels of organic electroluminescent devices formed by mainly using a fluorescent material as organic electroluminescent material and phosphorescent pixels of organic electroluminescent devices formed by mainly using a phosphorescent material as organic electroluminescent material.

2. The display panel according to claim 1, wherein

a first display section formed by arranging only fluorescent pixels and a second display section formed by arranging only phosphorescent pixels are separately provided.

3. The display panel according to claim 1, wherein

the area of each fluorescent pixel is greater than that of each phosphorescent pixel.

- 4. The display panel according to claim 3, wherein the ratio of the area of a fluorescent pixel to that of a phosphorescent pixel is inversely proportional to the ratio of the efficiencies of electroluminescence of the two different pixels.
- 5. A display apparatus comprising a display panel according to claim 1 and a control means for supplying signals to the display panel;
said control means being adapted to input signals to said display panel, said signals being differentiated between the fluorescent pixels and the phosphorescent pixels.
- 6. The display apparatus according to claim 5, wherein the timing of the falling edge of the video signal and/or a signal having a polarity opposite to that of the video signal is delayed for the signals to be input to the fluorescent pixels relative to the signals to be input to the phosphorescent pixels.

- 7. The display apparatus according to claim 5, wherein said control means is provided with a memory means for storing the arrangement and drive conditions of the fluorescent pixels and those of the phosphorescent pixels and signals corrected by referring to the electroluminescent characteristics of the fluorescent pixels and those of the phosphorescent pixels that are different from each other on the basis of the data stored in said memory means are input to each of the pixels.
- 8. The display apparatus according to claim 7, wherein said electroluminescent characteristics to be referred to in order to correct signals include the efficiency of electroluminescence.
- 9. The display apparatus according to claim 7, wherein said electroluminescent characteristics to be referred to in order to correct signals include the service life of electroluminescence.

* * * * *

专利名称(译)	显示面板和显示装置		
公开(公告)号	US20030231150A1	公开(公告)日	2003-12-18
申请号	US10/438029	申请日	2003-05-15
[标]申请(专利权)人(译)	佳能株式会社		
申请(专利权)人(译)	佳能株式会社		
当前申请(专利权)人(译)	佳能株式会社		
[标]发明人	YUKI OSAMU		
发明人	YUKI, OSAMU		
IPC分类号	H01L51/50 G09F9/30 G09G3/20 G09G3/30 G09G3/32 H01L27/32 H05B33/14		
CPC分类号	G09G3/3225 G09G3/3266 G09G2300/0452 G09G2300/0842 G09G2320/0233 H01L51/5016 G09G2320/0285 G09G2320/043 G09G2320/048 H01L27/3211 G09G2320/0252		
优先权	2002159000 2002-05-31 JP		
其他公开文献	US7012377		
外部链接	Espacenet USPTO		

摘要(译)

显示面板包括多个有序EL器件的排列像素，每个像素具有一对电极和包含有机EL材料并夹在电极之间的发光层。多个排列的像素包括通过主要使用荧光材料形成的有机EL器件的荧光像素和主要使用磷光材料形成的有机EL器件的磷光像素。显示装置包括控制装置，用于校正荧光像素的电致发光特性和磷光像素的电致发光特性之间的差异。

